



## Wokingham Without Parish Council

### Council Information

#### Wokingham Without

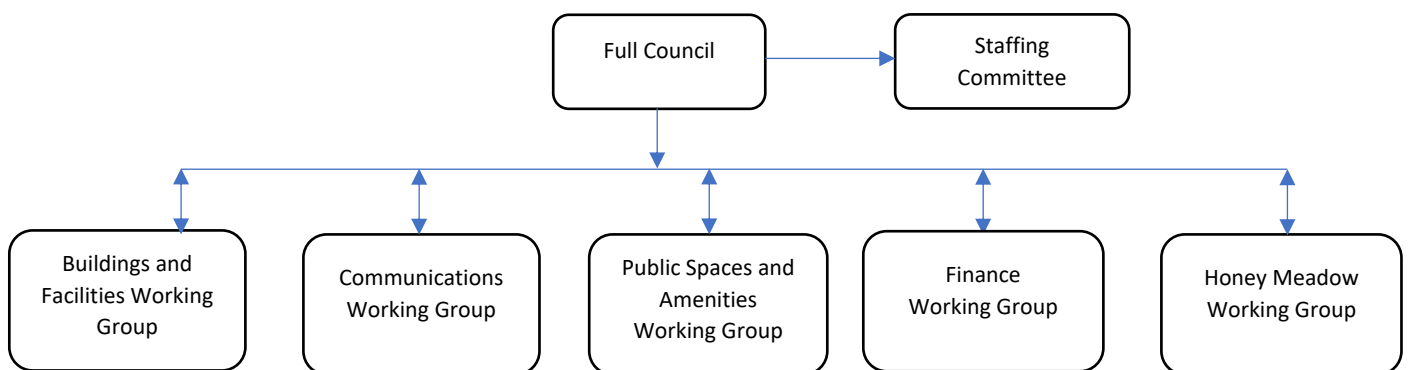
Located in the county of Berkshire, Wokingham Without is a semi-rural parish located between Crowthorne and Wokingham Town. The parish currently has around 8,000 residents, most of whom live in the south of the parish.

An area in the north of the parish has been identified as one of Wokingham Borough's Strategic Development Locations (SDLs), and with the commencement of works to deliver the new Southern Distributor Road, and pending planning applications for c1,800 homes, the parish expects to see building commence shortly. This new housing will bring with it an exciting opportunity for the parish to support the delivery of new community facilities, including a community hub, primary school and local centre (shops).

#### The parish council

The parish council covers a single ward (Wokingham Without) and is made up of 13 elected members. The council is non-political.

Council structure chart



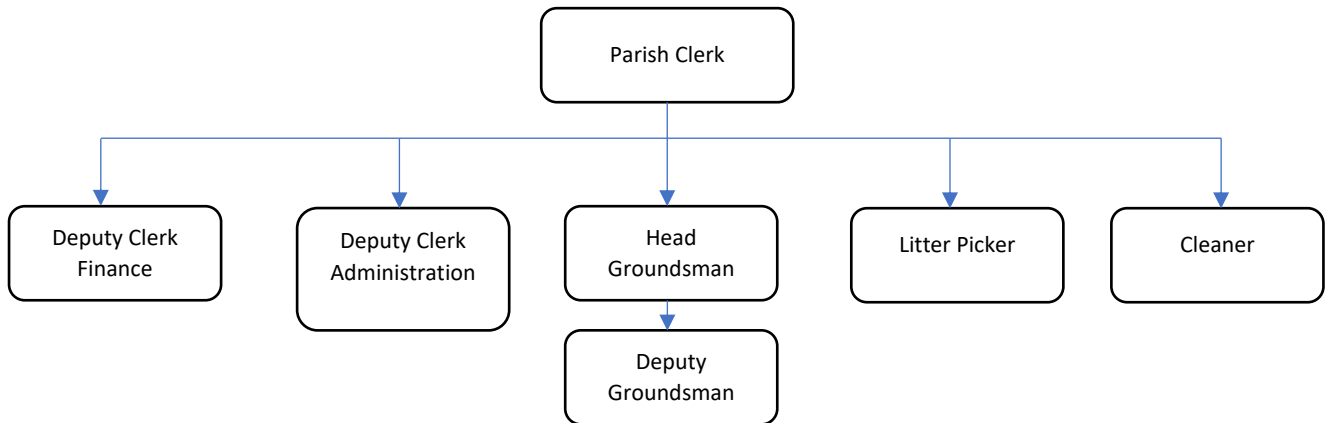
Other Working Groups are formed to manage specific projects (e.g. Footpaths, refurbishment of Pinewood Hall etc.)

The term of the current Council ends in May 2023 when all members will be up for re-election.

The council has an annual budget in excess of £400,000 per year and generates a significant proportion of its income from lettings, both of the St Sebastian's Memorial Hall and of the Pinewood site.

The council has been in receipt of significant CIL sums, which over the past few years have been invested in infrastructure improvements across the parish.

### The current staffing structure:



The parish Clerk is currently the only full-time officer; all other roles are part time.

### The council's services and activities

#### Our facilities:

Wokingham Without Parish Council leases the Pinewood site from Wokingham Borough Council and has managed it since the late 1970s. The site is a mix of original buildings and those built by the clubs themselves. Pinewood supports a range of community and leisure activities ranging from football to motorcycle training, dance to scouting, and a whole lot in between!

In addition to the buildings, the 32-acre site includes woodland, football pitches, an allotment, pond, community orchard, two playgrounds, trim trail and a large car park with recycling facilities.

The site has a fascinating history, which has been captured in the Pinewood History Group's recently published 'History of Pinewood Sanatorium' booklet.

#### Our buildings:

The council owns St Sebastian's Memorial Hall and the land surrounding it. The hall is hired by various local groups for activities such as yoga, pilates and dance.

The council has an active plan to expand the existing car park and open up the adjoining field as public open space.

## Other activities:

The council maintains a number of local litter bins, which are managed by the council's litter picker.

Alongside neighbouring Crowthorne Parish Council, the parish council engages in a number of joint activities, including:

- Joint trusteeship of Circle Hill and the Walters Recreation Ground
- A combined community Neighbourhood Action Group which meets 3 or 4 times a year.
- Biennial community awards

## Other council information:

The parish council has a website which provides information on the council and its activities:

<https://wokinghamwithout-pc.gov.uk/>

The website includes the council's adopted strategy, which covers the council's aims for the current term (2019-2023): <https://wokinghamwithout-pc.gov.uk/community/vision-statement>